

# Lightletter

Edition 1 | 2021

E-MOBILITY

DRIVING WITH  
ELECTRICITY



## Future and perspectives

Dear Sir or Madam,

For some time, the current situation, influenced by the CORONA pandemic, has demanded a lot from all of us mentally, organizationally, as a society, and in regard to business.

We would like to take the opportunity to wish you, your loved ones, as well as all partners and employees, strength and perseverance. Please stay healthy. We will overcome this crisis. Together. We feel certain of this and are working on this in every way possible. Our product is, as you know, "light". Light is also a synonym for the future and perspectives. We feel dedicated to this aspiration.

Therefore, this issue of our Lightletter is about the future and perspectives. We thus dedicate ourselves to the topic of "electric mobility", which is pioneering for our climate and the cities of tomorrow. We highlight trends, potential and the status of implementation.

We will also take you on a journey to our reference projects in Campbells Cove in Australia, to Schwieberdingen in Baden-Württemberg and to Berlin. In these places, we have helped to shape the future and create innovative perspectives using light as well as multifunctionality and design.

When it comes to the future and perspectives, our new products should not be forgotten - such as the „REVARA“ luminaire, which combines sophisticated design and high functionality in an ideal way. Neither should our CITY ELEMENTS illuminating bollards, into which our years of experience from the development of the bollards, have been perfectly incorporated.

We have also expanded our service area: With the RENO ELEMENTS configurator, you can create your own dream luminaire. At the same time, the new DIALux Plug-in provides you with an innovative software tool for professional lighting design at your fingertips.

You see: A great future and many perspectives for sophisticated urban spaces.

In this spirit, we wish you an informative, exciting and, in the truest sense of the word, an enlightening read.

With best regards,

Hess GmbH Licht + Form

Alexander Hartlieb  
Managing Director

ppa. Marco Walz  
Head of Human Resources  
and Marketing / Communications

**Light** and **architecture** have one thing in common – they lend **contour** to the world.

Oliver W. Schwarzmann, business poet



Project: Campbells Cove Sydney (AU)  
Product: Hess, CITY ELEMENTS 200  
Photo: Robert Walsh 2020

# CONTENT

TITLE

08

- 08 E-Mobility - Driving with electricity



08

REFERENCE PROJECTS

16

- 16 Campbells Cove, Sydney (AU)
- 24 Municipality of Schwieberdingen, Baden-Württemberg (DE)
- 30 Sankt Paulus Primary School, Berlin (DE)



16

HESS NEWS

32

- 32 New luminaire: REVARA
- 38 New illuminating bollard: CITY ELEMENTS 180
- 42 Site furnishings: Benches - with integrated added value
- 44 RENO ELEMENTS - The configurator
- 45 DIALux Plugin



38

ARCHITECTURAL LIGHTING

46

- 46 GRIVEN - The specialist in architectural lighting



46

GENERAL

48

- 48 Experience Brands
- 51 Imprint



48

**E-MOBILITY**

# DRIVING WITH ELECTRICITY

Rapidly increasing climate change, irreversible environmental damage and high levels of air pollution will further accelerate e-mobility as a key driver of future transport. Experts predict that the future of mobility development belongs to e-mobility. →



**The development is gaining momentum**

**E**-mobility is one of the most advanced main instruments in advocating for the stricken planet, alongside renewable energy, organic farming, waste avoidance and the digitalisation of production and work, as well as an increasing virtualisation of public and private sectors.

Extensive or even complete electrification of transportation would lead to a significant reduction in emissions and would have other advantages, such as the intelligent networking of an infrastructure that would then be automatically adaptable and, last but not least, would enable intermodal vehicle usage, which offers a maximum degree of flexible individual mobility.

One thing is clear: Without a tremendous expansion of electric mobility, including the corresponding infrastructure, the climate targets (see info box on page 15) issued by the federal government and necessary for the long-term preservation of our living space cannot be achieved.

In addition, with further expansion and densification of highly populated areas, the cities of the future are hardly conceivable without smart controlled traffic routes and electronically operated means of transport. And are also not desirable with regard to the quality of life of the residents. Smiled at just a few years ago, as a naive vision of those ambitious to save the world, e-mobility is now clearly taking off. In a study, the Boston Consulting Group (BCG) calculates

that more electric cars (battery + hybrid) will be sold in 2030 than conventional vehicles with combustion engines. According to the BCG, the development is being fuelled by the regulation of exhaust emissions and falling battery costs. In the coming years alone, prices are expected to fall by a whopping 80 percent.

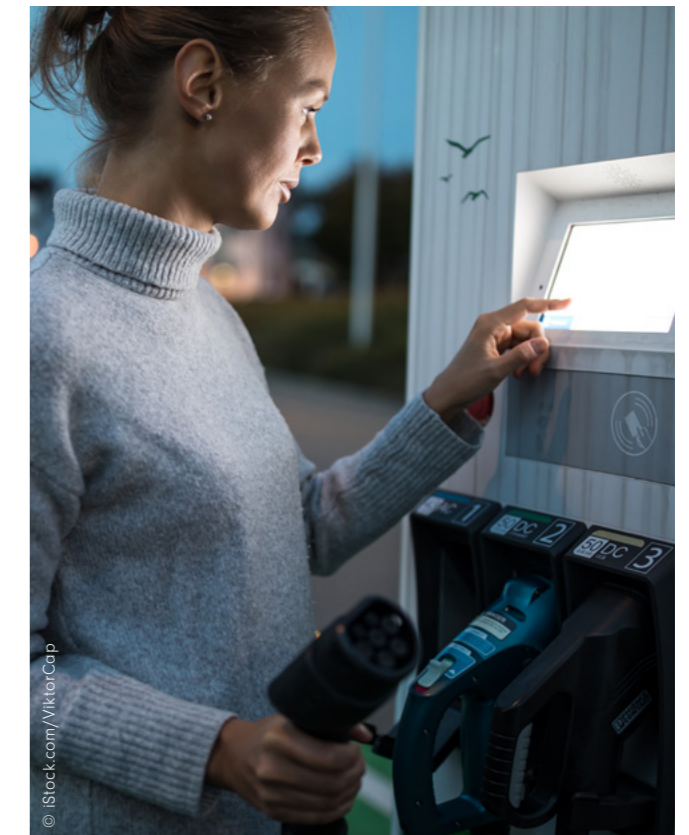
The government also continues to pursue ambitious plans: By 2030, those responsible envision 7-10 million electric cars and 500,000 electric trucks humming along the roads, supplied by 1 million charging points. These objectives now appear to be achievable. Because other economies are oriented towards the future as well: Not least, economic giant China is increasingly investing in the electrification of transport and is playing a pioneering role among the industrialized countries. Other countries are following suit. The „Electric Vehicle Index“ of the management consultancy McKinsey, has already identified Europe as the future hotspot of electric mobility.

**Modern mobility needs an intelligent infrastructure**

Purchase costs and range are two important criteria for the success of e-mobility. There is also another important aspect: An appropriate infrastructure for comprehensive power supply.

Here in Germany, there are around 18,000 public charging stations, the number of which must be further increased. Expansion is also necessary in the private sector, if sufficient charging capacity is to be created. Because anyone who goes on a long journey in an e-car wants to be able to reliably plan the charging possibilities.

However, there are other hurdles, such as different access requirements for recharging and different billing methods. The introduction of uniform access and payment systems is



therefore necessary. For example, billing according to kWh would make sense instead of flat-rate tariffs and charging times. →



In order to be able to charge according to kWh, however, calibrated meters must be installed in the charging stations, which is currently not technically possible at many charging stations.

For rapid charging stations, there are also no ideally slim, calibrated meters. An alternative is battery replacement, in which empty batteries are exchanged for full ones; a procedure that is already used in industry. Vehicle-to-grid

concepts are also being discussed and tested in which electric cars can connect to the power grid and act as storage devices.

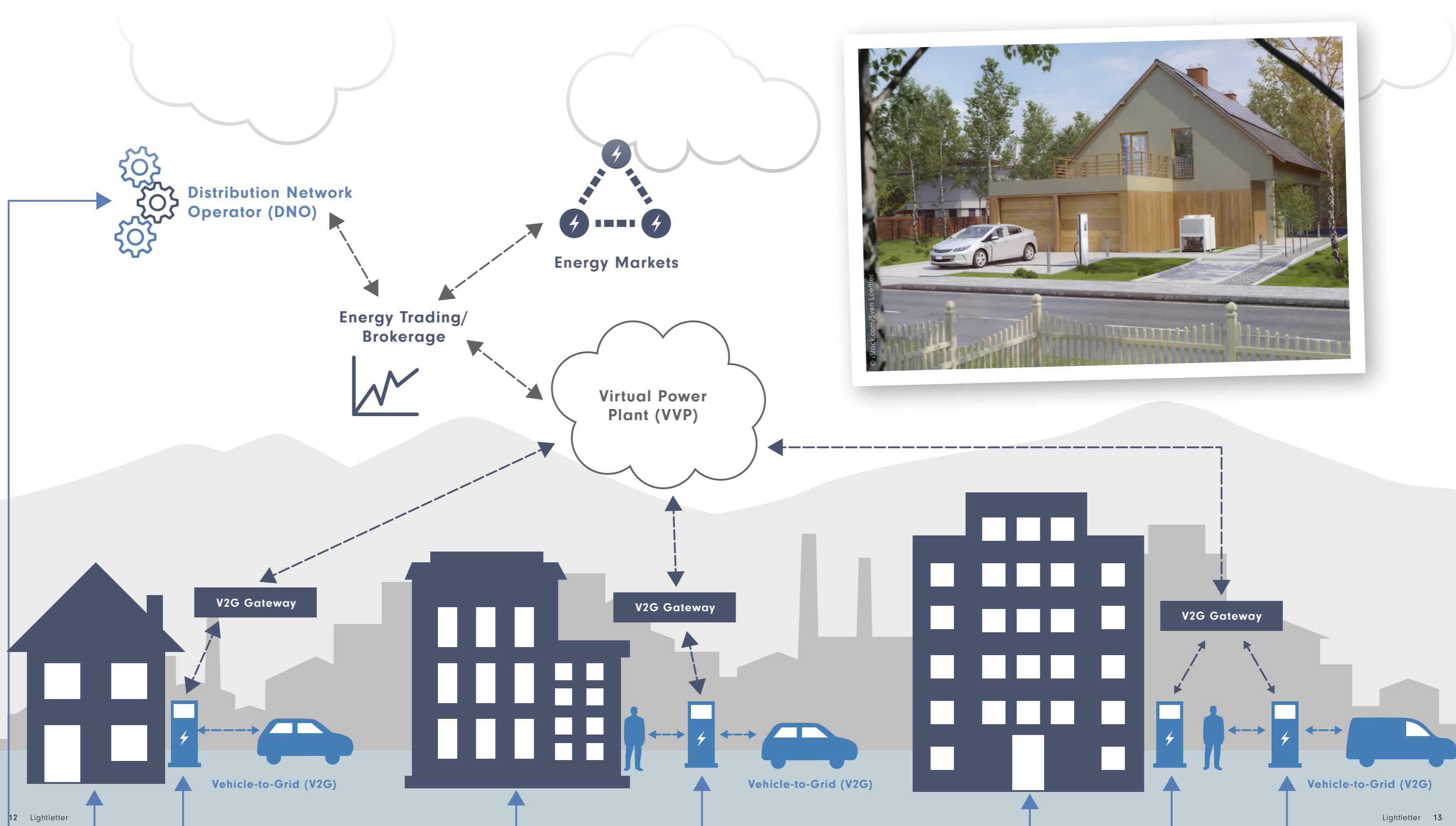
The main trend, however, will be towards a dense network of charging stations with high charging capacities in order to ensure a comprehensive supply and which will also make it possible to equip electric cars with smaller batteries. In the public sector, the expansion of charging stations is being

pushed forward rapidly with the increase in the number of e-cars. In addition, every private household could also be considered as a charging station, but at present the existing standard connections are still far too slow due to the low charging capacity.

High-voltage connections, on the other hand, would offer a much higher charging capacity, but are still quite expensive at the moment. In addition, the simultaneous use of high-

voltage current by several users in a residential area could lead to an overload of the distribution grid.

An interesting addition or even alternative, is the combination of solar systems and electric cars, also in terms of costs and the climate. →



### Multifunctional illuminating columns as stations of the future

Despite initial difficulties and some criticism, we are undoubtedly in the age of electrification and batteries. Vehicles and crafts of all kinds, whether on land, on water or in the air, are beginning to move electrically step by step.

Electric mobility is the key to creating clean and efficient transportation systems. Electric mobility is regarded, at least for the time being, as the winner among climate-friendly engines.

Alternative concepts, such as the hydrogen fuel cell car, are currently fading despite faster refuelling and a longer range because of the complex production of the fuel cell drive, high costs and too few hydrogen filling stations (among other things a consequence of the costly transport of hydrogen). Moreover, rechargeable batteries have developed faster than hydrogen technology. The current path therefore clearly leads towards electric mobility. Even

the technical problems encountered to date will soon no longer play a role: For example, the increasing expansion of intelligent power distribution systems (smart grids) ensures a high level of availability stability and helps to avoid overloads.

The charging times at the stations are also becoming increasingly faster due to higher performance known as "fast charging technology".

Cities and companies will continue to actively support electric mobility in the face of progressive digitization and the increasing number of e-cars, and will create the corresponding charging capacities in city centres, residential areas and parking lots, or promote them in the commercial and private sectors.

For the development and expansion of future-oriented infrastructure, multifunctional illuminating columns are available as junctions, as they already exist or are to be placed in central locations in public and semi-public spaces and could, in future, also offer charging points for

e-vehicles in addition to their current areas of application, such as lighting, communication and security.

What's more: The merging of lighting systems with charging units for electric mobility is certainly a concept for the future. Above all, because the infrastructure of the future should not only be smart, but also slim in the sense of integrating a wide range of services in as compact an apparatus as possible. The illuminating columns, some of which are very stringently designed, also round off the cityscape of the electronic Smart City as multifunctional and attractive stations of the future.

E-mobility is on the road to victory. Because it advantages outweigh its disadvantages: E-vehicles are not as technically complex as conventional vehicles; they do not

emit environmentally harmful emissions; they run quietly; and are inexpensive to maintain and supply, especially if users have access to their own power sources.

Last but not least, e-vehicles are fun to drive thanks to fast and uninterrupted acceleration. On the other hand, there are currently still high costs and a short driving range, but these are likely to be more than compensated for in the future with increasing production, a dense supply network and the further development of powerful battery technology.

With the evolution of electric mobility, the future-oriented transformation of the infrastructure is also progressing, lined with multifunctional illuminating columns as visible signs of modern civilization. ●

### CLIMATE TARGETS 2030

With the Climate Protection Programme 2030, the German Federal Government redefined its climate targets at the end of 2019 after it became clear that the previous plan, to reduce greenhouse gas emissions by 40% (below



1990 levels) by 2020, could not be achieved. The Climate Protection Programme 2030 sets a new mark: 55% less greenhouse gases than in the year 1990. The following are the core of the programme: CO2 pricing, subsidy programmes, savings, phasing out coal while at the same time expanding renewable energies and, last but not least, the restructuring of transportation with a massive expansion of the charging infrastructure to promote electric mobility (by 2030 there should be one million charging points available).

Source: <https://www.bundesregierung.de/breg-de/themen/klimaschutz/klimaschutzprogramm-2030-1673578>

It is not yet possible to foresee what impact the Corona Crisis and the shutdown of social and economic life will have on the climate and, consequently, on climate targets.

CITY ELEMENTS multifunctional lighting columns, with integrated charging station.



## REFERENCE PROJECTS

CAMPBELLS COVE (SYDNEY, AUSTRALIA)

# The picturesque bay in Sydney's historic harbour district shines in a new light

Campbells Cove shines in a new light – also thanks to the Hess luminaires used, which use innovative technology and the most modern design to impressively underline the extraordinary flair of one of Sydney's most beautiful districts – by day and at night. →



CITY ELEMENTS 200  
[www.hess.eu/en/ce200](http://www.hess.eu/en/ce200)



### The Rocks – Sydney’s historic promenade

Everyone who knows Sydney knows The Rocks. Sydney’s historic harbour and oldest district has always been a major attraction and a very lively and bustling area.

But long gone are the days when The Rocks still caused a stir with its dive bars, overcrowded with wild sailors and their dramatic stories from around the world.



After the extensive renovation in the 1970s, the harbour area with its old, quaint alleyways and restored buildings became a smart and extremely popular promenade with a first-class range of culture, art, events, markets, offices and top-class gastronomy.

Today, The Rocks, which is named after the rock on which the southern foundation of the Harbour Bridge was built, is an urban centre and a magnet for tourists, artists, traders, businessmen and locals alike, who are enchanted by the unique atmosphere of this magical place in Australia’s largest city. →



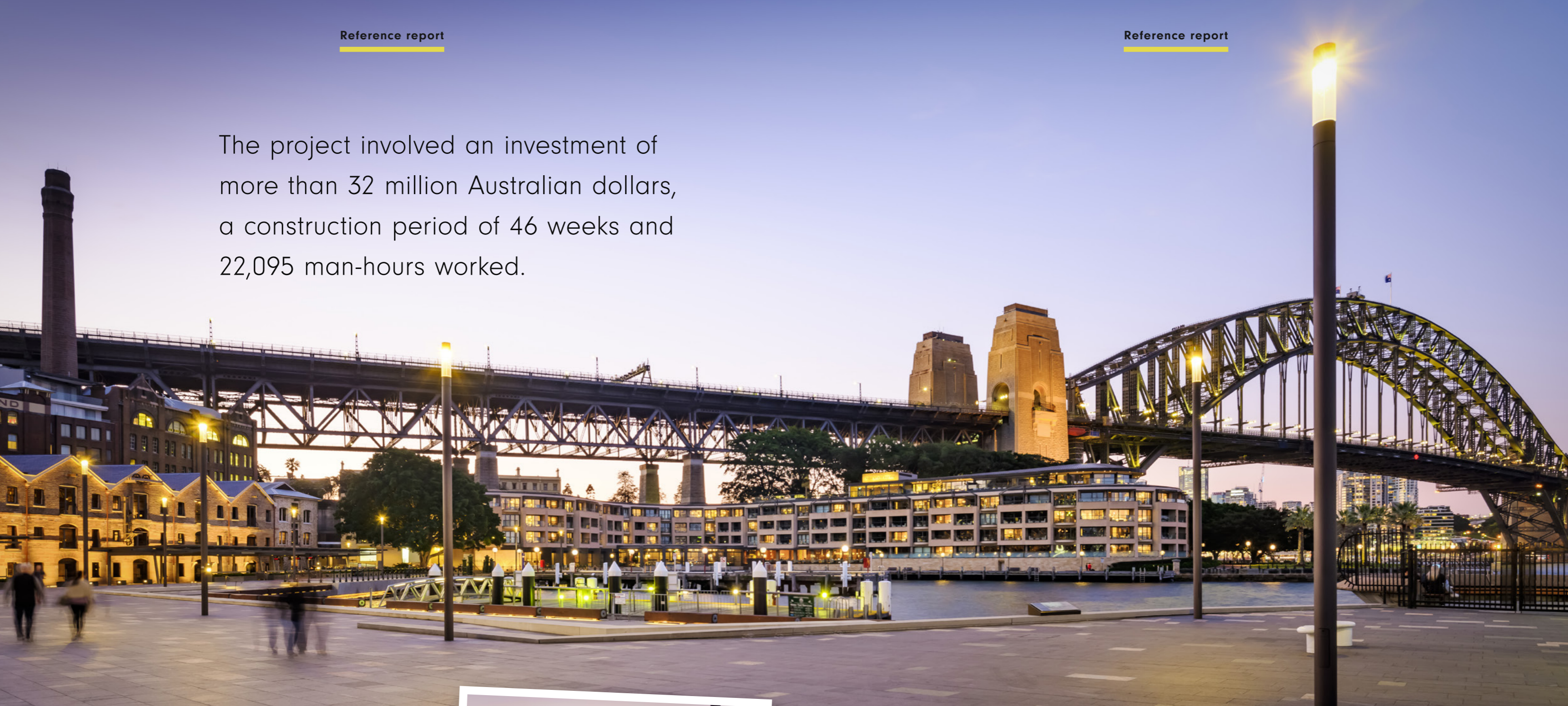
**Campbells Cove – the romantic bay in The Rocks**

Right in the pulsating heart of The Rocks, between Sydney's landmarks, the Harbour Bridge and the Opera House, lies the small and idyllic Campbells Cove. It is named after the businessman Robert Campbell, who built warehouses there in the middle of the 19th century to trade in wool, sugar, whale oil and sealskins.

The impressive sandstone buildings have been preserved, they form a unique backdrop and house world renown restaurants and bars. At the Campbells Cove wharf you can also experience the longing of great adventure first hand. From there impressive sailors sail off, and you can enjoy an exciting view of their masts. →



The project involved an investment of more than 32 million Australian dollars, a construction period of 46 weeks and 22,095 man-hours worked.



**Modernisation of Campbells Cove – with Hess luminaires**

In 2019, the renovation work on the wharf promenade of Campbells Cove was successfully completed. The goal of the modernisation project was to redesign and widen the riverbank zone, in order to create an attractive leisure area on the waterfront.

More than 32 million Australian dollars and a construction period of 46 weeks with 22,095 hours of work were invested in the project – including 4,700 square meters of paving, 48 high-security bollards, an amphitheatre as well as multifunctional lighting. Elements from the historical heritage of The Rocks and its eventful history were carefully integrated.



It was well worth the effort: Campbells Cove shines in a new light – also thanks to the Hess luminaires used, which use innovative technology and the most modern design to impressively underline the extraordinary flair of one of Sydney’s most beautiful districts – by day and at night. ●



**DESIGNERS AND PARTICIPANTS**



Client: Property NSW (NSW Government)  
 Project partner: Gartner Rose, North Sydney  
 Architect: Context, Sydney  
 Lighting design: POINT OF VIEW, Sydney  
 Luminaires: CITY ELEMENTS 200  
 Special features of CITY ELEMENTS:  
 Integrated cameras, power supply via sockets as well as special colour amber.  
 Photos: Robert Walsh 2020

A NEW LOOK FOR SCHWIEBERDINGEN (BADEN-WÜRTTEMBERG, GERMANY)

# Schwieberdingen – Commitment to an attractive town centre

In the course of the replacement of 50-year-old supply and disposal pipes in its main through-road, Schwieberdingen, a municipality with around 11,000 inhabitants in the district of Ludwigsburg, also undertook a redevelopment of its town centre. →



**CITY ELEMENTS 180**  
[www.hess.eu/en/ce180](http://www.hess.eu/en/ce180)



**DALVIK S**  
[www.hess.eu/en/dalvik-sl](http://www.hess.eu/en/dalvik-sl)



**RUBY R**  
<https://bit.ly/2LxGLiY>

### Renovation of the 'Stuttgarter Straße'

In mid-2019, construction work was completed over a length of 1.2 km on 'Stuttgarter Straße' between the roundabout at the eastern entrance to the town and the 'Glemsbrücke' bridge in the town centre.

Thanks to the road reconstruction and renovation of the infrastructure, the local surroundings were made more attractive. The town has thus realized its ideas and fulfilled the wishes of its citizens, who, in a 2016 survey, clearly declared themselves in favour of an attractive town centre.

Just under 11 million euros were invested in the complete renovation and redevelopment. This includes not only replaced pipes and flood protection, but also new street and square lighting, cycle paths and protective markings, landscaped areas and improved accessibility.

### Successful upgrading of the town centre

From the very beginning, the aim of redesigning the central area of the town was to slow down traffic and make the atmosphere of this area more inviting. After all, everyone should feel comfortable in the town. The 'Vaux-Le-Penil' square, a homage to the partner town in France and an eye-catcher on the Schwieberdinger main through-road,



formed a central point of the reconstruction. The square is adorned by a newly planted lime tree, around which a raised, 32 square metre, wooden deck is built.



### Attractive lighting – with added value

The lime tree is a real gem, which deserves to be perfectly staged at night. Spotlights from Hess' sister company GRIVEN, with a light colour of 3000K, embedded in the wooden deck, ensure that the lime tree does not lose any of its extraordinary effect even at night – quite the contrary is true.

In order to ensure a lastingly tidy appearance on this square, 6-metre-high multifunctional CITY ELEMENTS 180 are used around the wooden deck – some of them in very different designs. The CITY ELEMENTS, for example, are fitted with DALVIK S luminaire heads or have a display screen for local public transport.

The possibility of including a traffic light module was also created and columns were equipped with corresponding buttons for traffic light operation. →



## Reference report

Following the road to the east, parking spaces are arranged between the trees, slowing down traffic and making the townscape even more attractive.

DALVIK S luminaire heads with an output of 53 W - 80 W and a light colour of 4000 K, also with a mounting height of around 6 metres, provide excellent illumination.

Additional sockets were also integrated in the upper half of many of the poles.



### Enhancing urban spaces...

...during the day and at night. In this way, luminaires from Hess provide a thoroughly attractive appearance, regardless of the time of day.

The street and square lighting not only ensures brightness and security, but also sets the decisive accents for the optical street layout, the character of the town and the desired atmosphere in the town centre.

Moreover, the design of the luminaires blends in harmoniously with the silhouette of the town and gives the location its own pleasant contours. ●

## Reference report



### DESIGNERS AND PARTICIPANTS



Client: Municipality of Schwieberdingen  
Architect: Rauschmaier Ingenieure GmbH  
Lighting design: Hess GmbH Licht + Form  
Luminaires: CITY ELEMENTS 180, DALVIK S,  
GRIVEN RUBY R in-ground spotlight  
Photos: Hess GmbH Licht + Form



PRIMARY SCHOOL SANKT PAULUS (BERLIN, GERMANY)

# Illuminated schoolyards for bright minds

The Sankt Paulus Primary School in Berlin-Moabit also received new lighting as part of the renovation of its schoolyards.

The "Aktive Zentren" [Active Centres] support programme of the State of Berlin provided funds for the "Mitte-Turmstraße" area in Moabit, which included the modernisation of the schoolyards of Saint Paul's Catholic School in the of "Waldenser Straße" neighbourhood.

The nearly 400 students from over 50 nations were allowed to have a say in the project planning from the very beginning and to express their wishes regarding the playground equipment. This included a stage with a sun

shade, lounging areas, a trampoline, a slide, hopscotch courts, a streetball court, plants and, last but not least, a small house for play equipment.

The proposals resulted in a design competition, which three landscape architecture firms entered with their ideas. The majority of the jury, consisting of student representatives, teachers, child care teachers and a parent representative, decided in favour of the design by Berlin landscape architect Frank von Barga and then actively participated in the final planning.



The construction of both schoolyards has now been successfully completed and the front façade of the school building has also been renovated.

The lighting is provided by attractive RESIDENZA C luminaires, which integrate perfectly into their surroundings in terms of shape and colour. In addition, the newly planted tree on the playground is effectively protected by a SERPO tree grate, which in turn is a real eye-catcher.

The building project, realised with the participation of the students in regards to the design and planning, was praised by all those involved.

The renovation of the St. Paul schoolyards thus makes an important contribution to the Berlin support program "Aktive Zentren" [Active Centres], whose main goal is to strengthen social and ethnic integration and promote cooperative action. A shining example. For bright minds. ●



**RESIDENZA C**  
www.hess.eu/en/residenza-sl



**Tree grate SERPO**  
www.hess.eu/en/serpo

## DESIGNERS AND PARTICIPANTS



Client: Archdiocese of Berlin  
Landscape architect: Frank von Barga -  
Freelance Landscape Architect  
Lighting design: Hess GmbH Licht + Form  
Luminaires: RESIDENZA C  
Site furnishings: Tree grate SERPO  
Photos: Hess GmbH Licht + Form



Public spaces and buildings require lighting concepts that are increasingly functional and attractive at the same time. The REVARA from Hess: A luminaire that more than meets these requirements – by day and at night. →

# REVARA

reduced · style-defining · powerful



COMING  
SOON  
Q2 2021



REVARA  
[www.hess.eu/en/revara](http://www.hess.eu/en/revara)

# THE REVARA ...



### ... ATTRACTIVE BY DAY ...

The design offers a slim, reduced form and style-defining elements at the same time. The characteristic ribbed structure of the luminaire, deliberately designed as a visible element and connection cables enclosed by a fabric tube, or also the use of identical radii, all form striking design features which ensure an extremely attractive and harmonious appearance.

### ... EASY TO USE ...

The REVARA is thoroughly refined and well-thought-out. This means that the luminaire can be opened very easily and the electrical unit as well as the glass or the seal can be

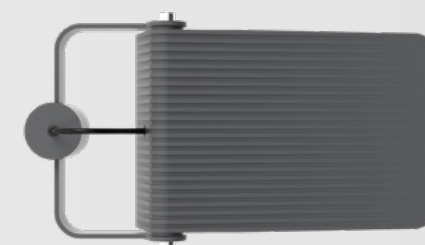
replaced without difficulty - without any tools. And thanks to the connection to masts with a spigot diameter of 76mm and 60mm, the luminaire is also versatile.

### ... POWERFUL AT NIGHT!

Speaking of versatile. With a system output of up to 107 watts, the REVARA is ideally suited for mounting heights between 4.5m and 8m. A variety of optics as well as the possibility of connecting a wide range of dimming and control systems ensure maximum performance, flexibility and efficiency.

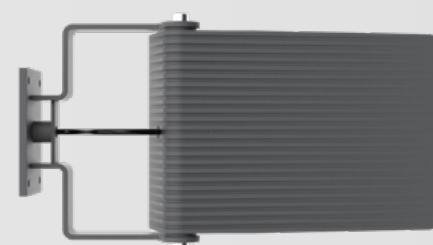
# A COMPLETE FAMILY ...

REVARA L 600



REVARA L 600

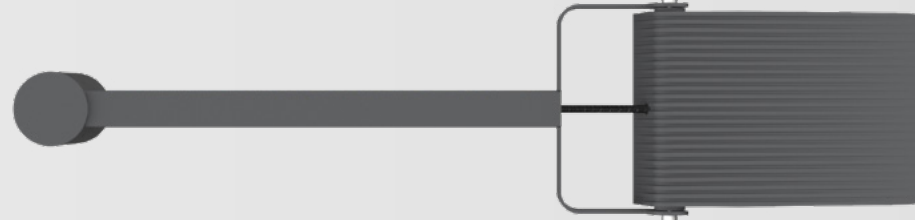
REVARA WL 600



The REVARA is available in 3 versions right from the start: As a bracket-mounted luminaire, a bracket-mounted luminaire with a long bracket and as a wall bracket luminaire. As a further variant, the REVARA will also be available as a bollard luminaire.

As a complete family, the REVARA is therefore ideally suited to create urban spaces in a uniform and harmonious overall picture.

REVARA L 1400



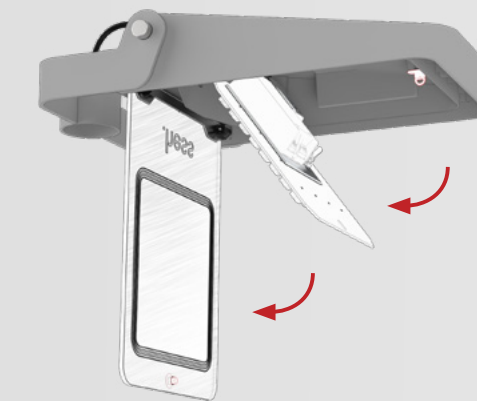
REVARA L 1400



# THE HIGHLIGHTS

Sophisticated design meets high functionality. The REVARA combines the best of both worlds. A high design standard goes hand in hand with many technical refinements and a simplicity that is more than impressive in terms of installation and maintenance of the luminaire.

See for yourself how well thought-out the concept of the REVARA is:

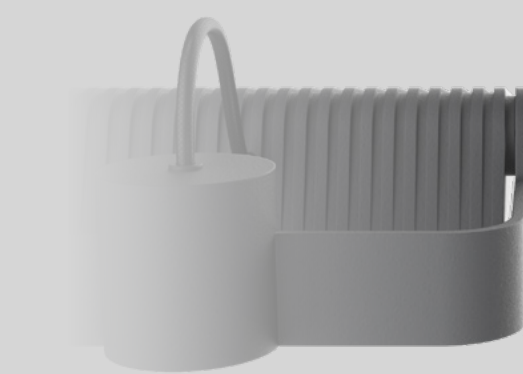


REVARA maintenance video  
<https://bit.ly/37g8Flh>

- ✓ **Housing can be opened without tools -**  
Simply push the button which releases the self-locking device and safety catch
- ✓ **Electrical system can be swung downwards to open and replaced without tools -**  
The electrical system is automatically de-energised when the unit is swung open
- ✓ **Drivers can be changed without tools**  
(with the electrical system swung open)
- ✓ **Wide range of system wattages -**  
Power range from 27-107 watts
- ✓ **Ideal for mounting heights from 4.5m-8m**
- ✓ **Stepwise adjustment of the setting angle -**  
Angle adjustable from 0°-30° via lateral fixing
- ✓ **Variety of optics -**  
for almost every requirement

# THE REVARA L 600 BASIC

The REVARA L 600 BASIC represents the entry into the world of REVARA. Designed for projects with a particularly tight budget, this version already has all the essential features needed to enhance urban spaces in an attractive way.



The REVARA L 600 BASIC is equipped with the following:

- ✓ **Luminaire colour in attractive DB703**
- ✓ **Light colour in either 3000K or 4000K**
- ✓ **Choice of protection rating I or II**
- ✓ **System wattage ranges from 27 to 53 watts**
- ✓ **LEVO3 with 3 different optics: O1, O3 and O7**
- ✓ **Can be opened and serviced with simple tools**
- ✓ **Dimmable via ASTRODim and DALI**

# CITY ELEMENTS 180 ILLUMINATING BOLLARDS

The CITY ELEMENTS 180 illuminating bollard by Hess –  
the CITY ELEMENT among illuminating bollards! →



**CITY ELEMENTS 180 illuminating bollards**  
[www.hess.eu/en/ce180-tp](http://www.hess.eu/en/ce180-tp)



## CITY ELEMENTS – FOR SMART URBAN SPACES

### CITY ELEMENTS

CITY ELEMENTS, from Hess, is a multifunctional lighting system suitable for meeting all requirements in a smart city and in a smart urban space.

The potential of CITY ELEMENTS columns goes far beyond mere illumination thanks to their modularity: From loudspeakers, cameras, illuminating elements, power and water connections to charging infrastructures for e-mobility. Thanks to the individually combinable elements, diverse and additional functions and supply solutions are offered.

For the urban requirements of today and tomorrow.

### CITY ELEMENTS ILLUMINATING BOLLARDS

The extensive experience that we have gained over the years with the CITY ELEMENTS illuminating columns has been incorporated in the development of the new CITY ELEMENTS 180 illuminating bollard.

We were thus able to transfer the trusted modularity that has proven itself in worldwide projects to the new illuminating bollard and have significantly improved the ease of installation.

In short: We simply made it better.

The CITY ELEMENTS 180 illuminating bollard by Hess – the CITY ELEMENT among illuminating bollards!



CITY ELEMENTS 180 illuminating bollard video  
<https://bit.ly/3nkZxY0>

## HIGHLIGHTS

The CITY ELEMENTS 180 illuminating bollard is comprised of a base element and a top element. You have a variety of options to choose from: Thanks to its modularity, the CITY ELEMENTS 180 illuminating bollard is a prime example of versatility.

Don't you agree?

- ✓ **Modular design –**  
consisting of a base and top element and thus freely configurable
- ✓ **Bayonet fitting –**  
for simple connection of base and top element
- ✓ **Top element –**  
already sealed ex works
- ✓ **High-performance LED modules –**  
with 9 up to 28 watts of power
- ✓ **Internal shade (optional) –**  
can be fitted on the top element ex works or at a later point in time
- ✓ **Motion detector –**  
now available as standard
- ✓ **Electrical supply possible:**  
CRVE base element available with the following two equipment options:  
Electrical design possibilities:  
GS 0 = without equipment  
GS 05 = 1x SCHUKO 250V / 16A

The CITY ELEMENTS 180 illuminating bollard complements the CITY ELEMENTS illuminating columns in a perfect way and with an unprecedented stringency.

Modularity and versatility made by Hess.

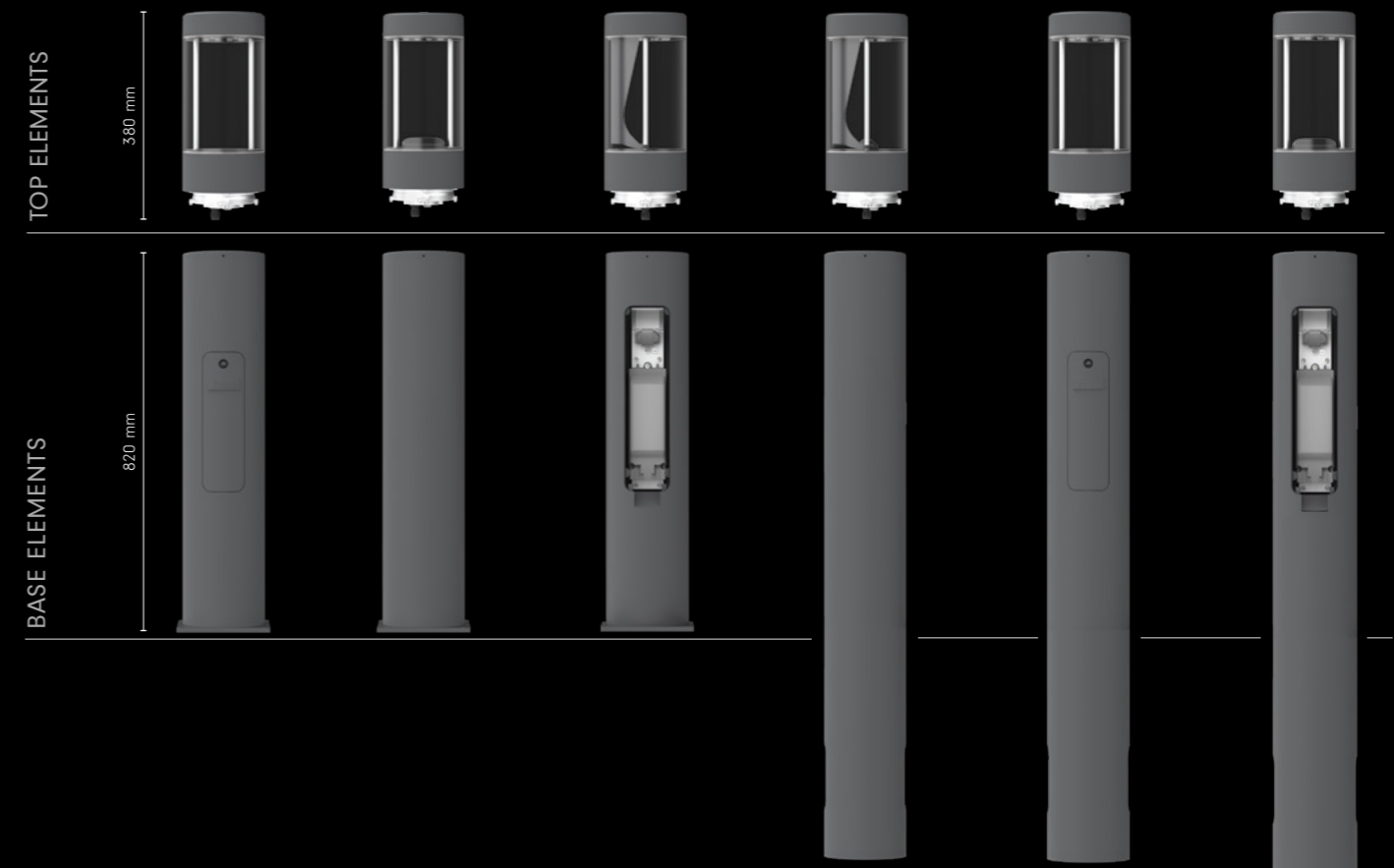
## MODULARITY THANKS TO ELEMENTS

Do you need a base element with an embedded base or with a flange plate, with or without an inspection door, with a socket or a key switch as an option? No problem.

Do you want a top element with completely different optics, with or without dimming, with a wide variety of control

systems? Or a top element that is equipped with a motion detector or is also suitable for emergency power as an option? That's also no problem.

Configure the system according to your individual needs. ●



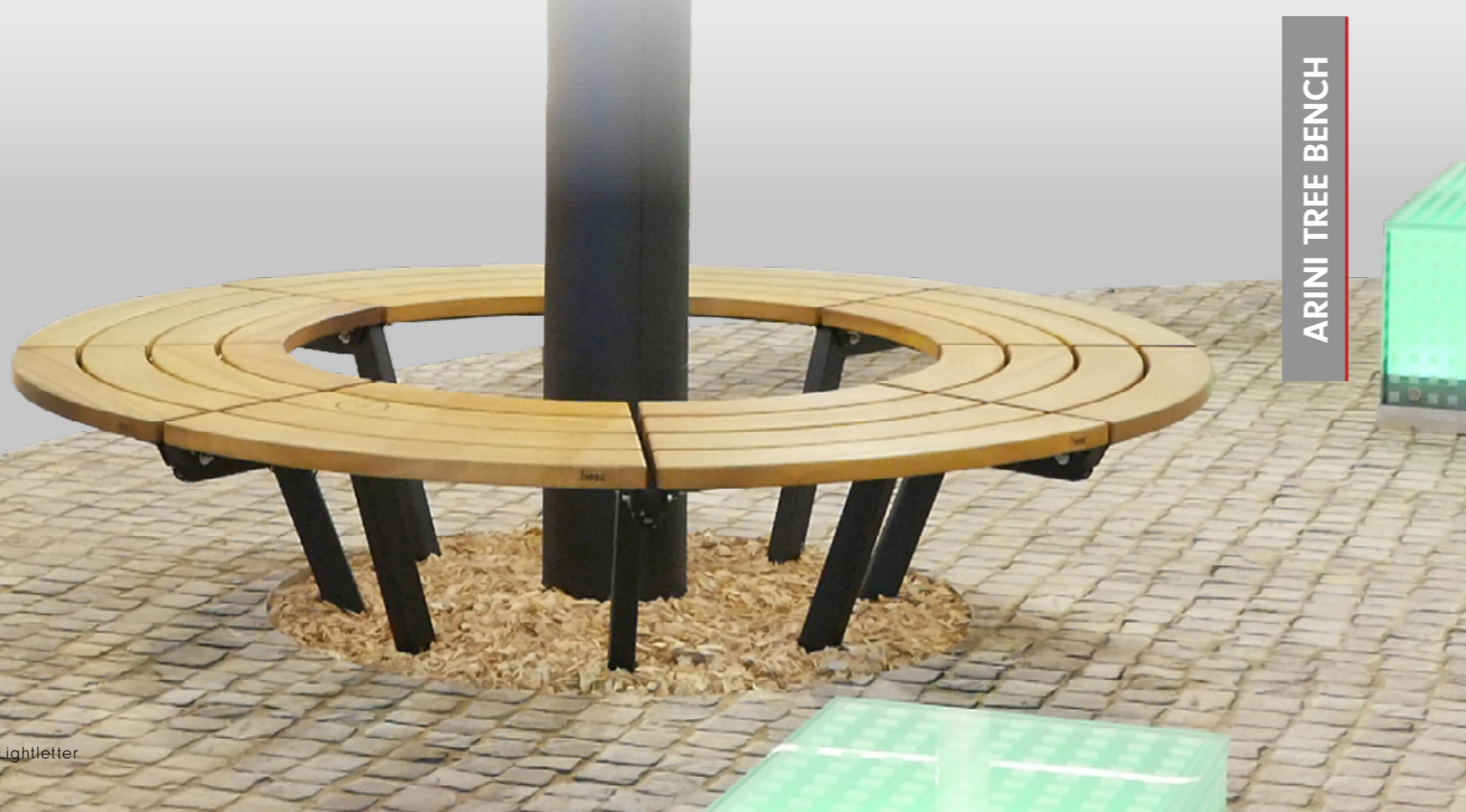
BENCHES FROM HESS

# Benches – with integrated added value

Benches from Hess stand for the utmost in quality and durability, have a high level of utility as a place to take a break, and serve as visual highlights in urban spaces.

## Benches from Hess – high quality, durable and impeccably designed

The benches are available in a wide range of designs, but they all share a few common characteristics: select weatherproof materials that captivate with their sophisticated look and feel as well as unrivaled workmanship and, thanks to their exemplary design, they cut an exceptionally fine figure in any urban environment!



## Smart benches – for smart urban spaces

You want to offer your residents, guests, and visitors something special? No problem at all.

While they enjoy a break on our bench, they can charge their smart phone or tablet at the same time. It's very convenient and completely wireless thanks to the integrated Qi charging stations, which are perfectly embedded in the battens of the seat and specially designed to meet the demands of outdoor use.

It is also possible to install USB charging sockets on request. With each design, we make sure that the cables

and plug connections are laid and attached in such a way that they can withstand the most challenging environments – whether in terms of weather or vandalism.

Every visit to your shopping mall, marketplace or outdoor area will thus be an unforgettable experience without any unpleasant surprises.

**Benches from Hess – with integrated added value. ●**

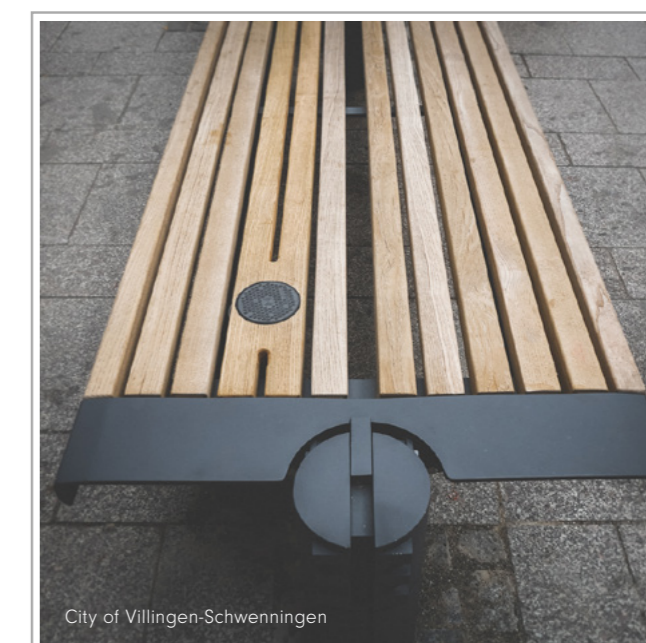
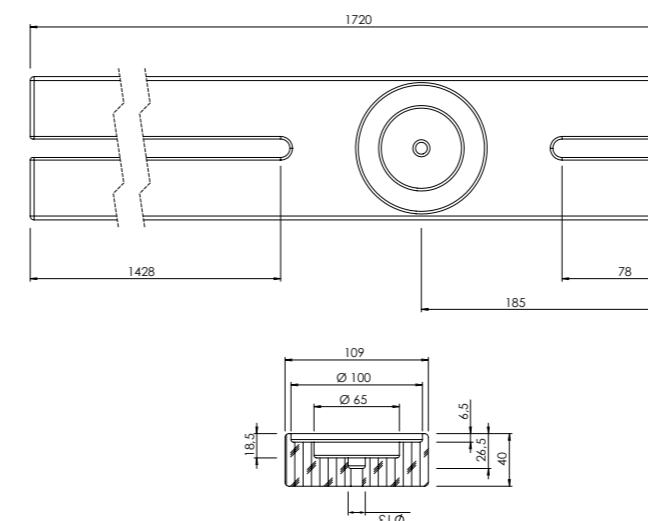
## Technical specifications

We integrate the waterproof 12/24V qi certified wireless charger range from Scanstrut, Type ROKK, which enables phone and tablet charging in a very easy and comfortable way.

- Preinstalled
- Input voltage range: 10–30V (12/24V system)
- Input current max: 1.5A
- Power: 5W (5V, 1A)
- Ingress protection: IPX6 waterproof
- UV-stable
- Anti-slip



Charging module recessed into the battens – for a perfect look and maximum resilience.



City of Villingen-Schwenningen

Figures similar; appearance may vary depending on the installation situation. Subject to technical changes.

NEW AND INTUITIVE

# RENO ELEMENTS – The configurator

Compile your desired RENO ELEMENTS – quickly and conveniently. Discover this easy way to configure your specific luminaires. ●

[configurators.hess.eu](http://configurators.hess.eu)


RENO ELEMENTS configurator  
[configurators.hess.eu](http://configurators.hess.eu)

# DIALux PLUGIN

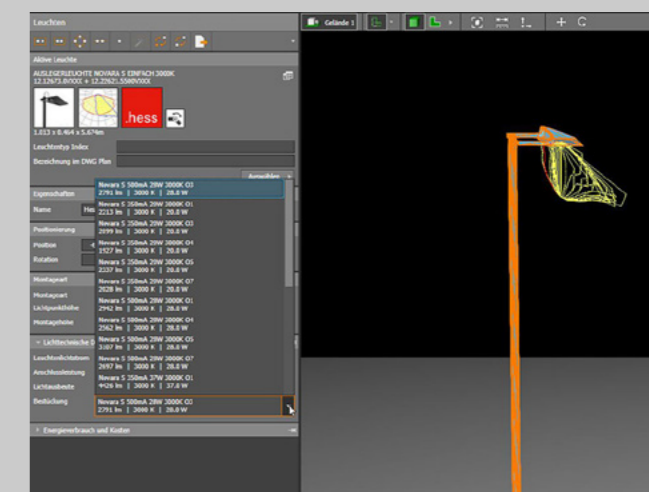
## DIALux Plugin

With the new DIALux-Plugin, you have the possibility of accessing our technical lighting specifications quickly and easily. Thanks to its completely reworked way of functioning, the plugin is intuitive to operate and offers the possibility of planning complete lighting systems.

**A**s a standard application, the plugin from DIALux is indispensable and, in the meanwhile, lighting design without this tool is almost unimaginable.

With our new DIALux-Plugin, you have the possibility of accessing our technical lighting specifications and models quickly and easily.

Just try it out! ●



DIALux Plugin  
[www.hess.eu/en/downloads/dialux](http://www.hess.eu/en/downloads/dialux)

# GRIVEN

## The specialist for architectural lighting solutions

Our Italian affiliated company GRIVEN has established itself as one of the leading development and manufacturing companies in the architectural lighting market worldwide – especially in the high-power segment. Distribution of the GRIVEN portfolio is handled by Hess within the German market.

The range of spectacular lighting effects that GRIVEN's innovative product and solution portfolio makes possible, as well as the know-how of GRIVEN are demonstrated by these selected project examples.

### GRIVEN CATALOGUE



### New catalogue

In the course of 2020, GRIVEN brought a large number of new products to the market – and also published a new catalogue. It is currently being translated and will be made available to you in German as soon as possible via the usual methods and channels.

In the meantime, the English catalogue is available for download from our website and can also be requested from us at any time. ●



GRIVEN  
www.griven.com



Download the catalogue as a PDF document  
<https://bit.ly/35leJxU>

# EXPERIENCE BRANDS



The Nordeon Group officially becomes EXPERIENCE BRANDS. The rebranding comes after several significant changes within our fast-growing conglomerate to better reflect the strategy and progressive mindset of its individual operating companies, which includes Hess GmbH Licht + Form, Vulkan, GRIVEN S.r.l., Lamp, Nordeon Lighting Solutions GmbH, SCHMITZ | WILA, and WILA Lighting Ltd. The move follows the completion of numerous initiatives in 2020 to transform the group to a more dynamic customer-centric organization.



Company video  
<https://bit.ly/3bJArhw>



Experience Brands  
[www.experiencebrandsglobal.com](http://www.experiencebrandsglobal.com)

**.hess**

[www.hess.eu](http://www.hess.eu)

**Vulkan**  
since 1898  
 A brand of Hess

[www.vulkan.eu](http://www.vulkan.eu)

**GRIVEN**

[www.griven.com](http://www.griven.com)

**LAMP**  
Worktitude for light

[www.lamp.es](http://www.lamp.es)

**NORDEON**  
LIGHTING SOLUTIONS

[www.nordeon.com](http://www.nordeon.com)

**SCHMITZ | WILA**

[www.schmitz-wila.com](http://www.schmitz-wila.com)

**WILA**

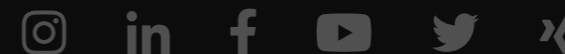
[www.wila.com](http://www.wila.com)





Luminaire: FARO

FOLLOW US:



Search for: „Hess GmbH Licht + Form“

Click on in today!  
www.hess.eu



IMPRINT  
 Editor:  
 Hess GmbH Licht + Form  
 Lantwattenstr. 22  
 D-78050 Villingen-Schwenningen  
 www.hess.eu

Editing:  
 Marco Walz (V.i.S.d.P.)  
 Graphic / Layout:  
 Josua Huonker

Contact:  
 marco.walz@hess.eu  
 Tel.: +49 (0) 7721 920-475

Appearance:  
 2 times a year

Print:  
 Druckerei LEUTE GmbH

Image credits:  
 Cover image „E-mobility, blue electric car charging battery - 3d illustration“: © peterschreiber.media - stock.adobe.com  
 Back page „Interior Hintergrund Schwarz“: © iStock.com/themacx

Hess GmbH Licht + Form · Lantwattenstraße 22 · 78050 Villingen-Schwenningen

**NEW**

## **RENO ELEMENTS: The configurator**

Intuitively configure –  
light, multifunctionality  
and design.

[CONFIGURATORS.HESS.EU](https://configurators.hess.eu)

